



 **borgo**<sup>®</sup>

Hyphyn Coordinates

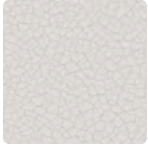
+

**MAYER**FABRICS





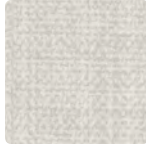
**GADGET**  
GT-007 Pumice



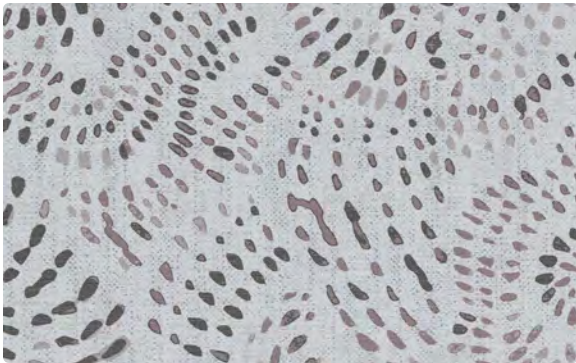
**GAIA**  
GI-027 Mist



**COSMOS**  
CO-027 Limestone



**TELLUS**  
TE-007 Alabaster



**UNIVERSE**  
UN-006 Mineral



**GAIA**  
GI-016 Metal



**COSMOS**  
CO-010 Clove



**TELLUS**  
TE-020 Cobblestone



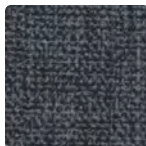
**GADGET**  
GT-006 Iron



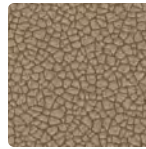
**GAIA**  
GI-36 Coal



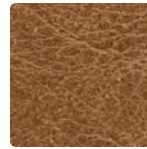
**COSMOS**  
CO-016 Quarry



**TELLUS**  
TE-016 Caviar



**GAIA**  
GI-000 Bronze



**COSMOS**  
CO-002 Honey



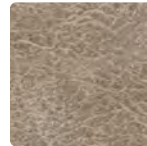
**TELLUS**  
TE-030 Khaki



**GADGET**  
GT-002 Biscotti



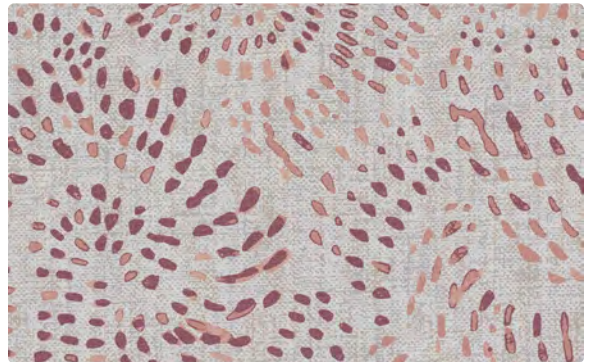
**GAIA**  
GI-001 Blush



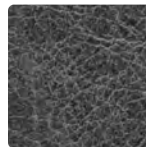
**COSMOS**  
CO-017 Morel



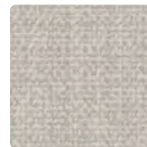
**TELLUS**  
TE-001 Garnet



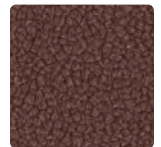
**UNIVERSE**  
UN-001 Coral



**COSMOS**  
CO-026 Cinder



**TELLUS**  
TE-017 Linen



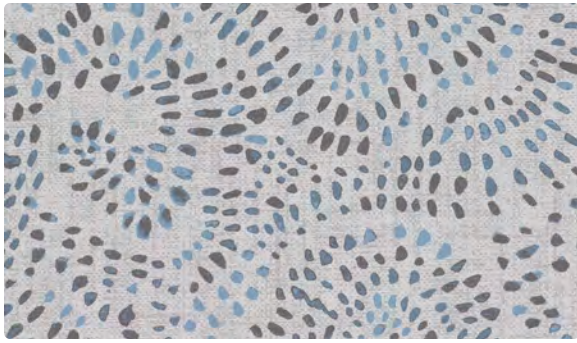
**GAIA**  
GI-021 Brick



**GADGET**  
GT-005 Claret

**Gadget and Universe shown at approx. 50% scale.**  
Additional colors are available. Please refer to the Mayer Fabrics website.

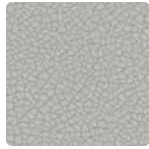




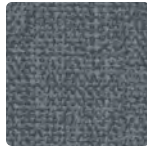
**UNIVERSE**  
UN-004 Isle



**TELLUS**  
TE-027 Glacier



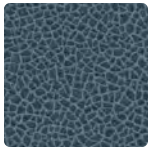
**GAIA**  
GI-037 Dove Grey



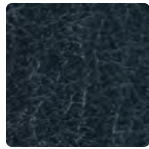
**TELLUS**  
TE-026 Storm



**GADGET**  
GT-014 Nile



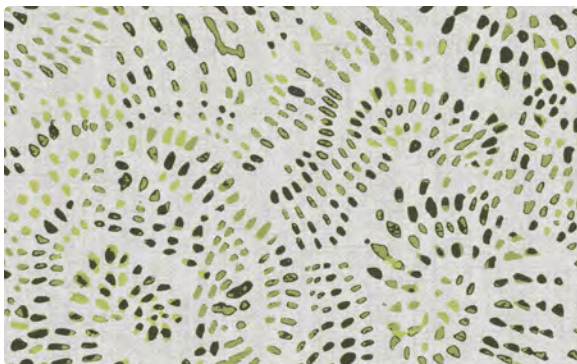
**GAIA**  
GI-014 Isle



**COSMOS**  
CO-014 Thunder



**TELLUS**  
TE-014 Inky Blue



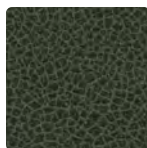
**UNIVERSE**  
UN-003 Fern



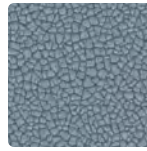
**COSMOS**  
CO-003 Moss



**GAIA**  
GI-023 Celery



**GAIA**  
GI-043 Billiard



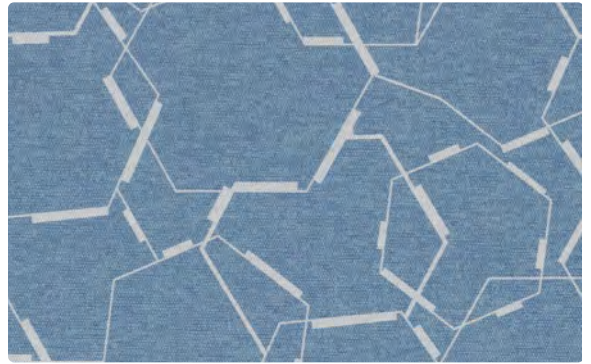
**GAIA**  
GI-004 Agate



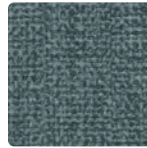
**COSMOS**  
CO-037 Cement



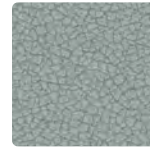
**TELLUS**  
TE-024 Blue Jeans



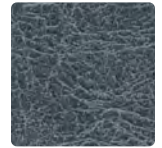
**GADGET**  
GT-004 Cool Blue



**TELLUS**  
TE-034 Tradewind



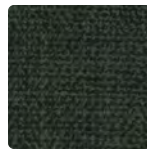
**GAIA**  
GI-003 Mint



**COSMOS**  
CO-004 Bluestone



**UNIVERSE**  
UN-014 Pacific



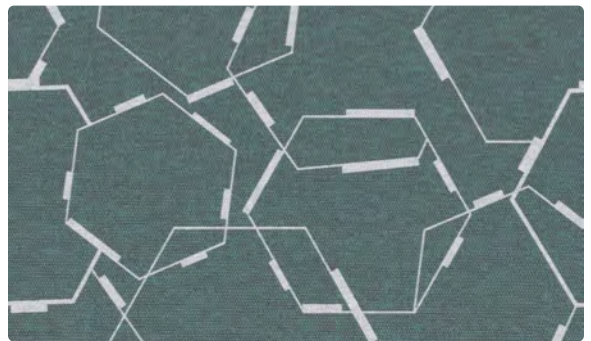
**TELLUS**  
TE-033 Hunter



**TELLUS**  
TE-023 Pesto



**COSMOS**  
CO-023 Dark Green



**GADGET**  
GT-003 Fir

**Gadget and Universe shown at approx. 50% scale.**

Additional colors are available. Please refer to the Mayer Fabrics website.



## Engineered to perform. Designed to disappear.

Hyphyn re-imagines what vinyl can be – luxuriously durable in life yet destined to fade away when its journey ends. This first-of-its-kind biodegradable vinyl is crafted with a proprietary enzyme system, enabling it to biodegrade over 90% within two years in a landfill. Performance and sustainability don't just coexist – they thrive, beautifully.

**What's in a Name?** Hyphyn™ is a connection between the present and the future. It's being mindful about a product's journey beyond its useful life.

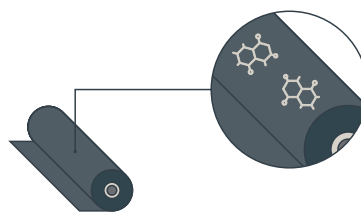
**What is Hyphyn?** Hyphyn is a vinyl upholstery that is made with an embedded, patented enzyme system that, combined with a proprietary resin formulation, creates a biodegradable performance material.

## Hyphyn™ vinyl biodegrades over 90% within 24 months in landfill conditions.

### How Hyphyn Works

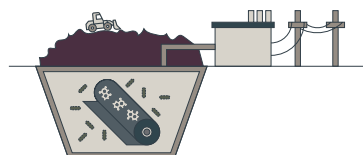
#### Patented Enzyme System

Embedded in Hyphyn is a patented enzyme system. The enzymes sit dormant while the material is in use.



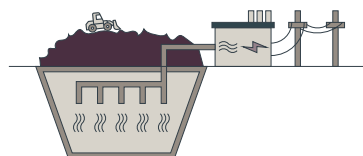
#### Biodegradation Starts in a Landfill

Hyphyn will not degrade until it's in anaerobic landfill conditions, where its enzymes interact with landfill-specific microorganisms to break the material down into organic matter.



#### There are No Toxins

There are no toxins left behind as Hyphyn biodegrades. Instead, it converts into inert gases that are reclaimed and can be transformed to energy.





# TECHNICAL INFORMATION

## Hyphyn™ Coordinates

Pattern 54"	Content and Backing	Certifications	Weight/ Linear Yd.	Pattern Repeat	Finish	Abrasion	Light- Fastness	Flammability	Cleaning Code
COSMOS	80% Hyphyn™ Biodegradable Vinyl face, 20% Hyphyn™ Biodegradable Polyester backing	GREENGUARD Gold	31 oz.	None	Soil & Stain Resistant Top Coat	250,000^ Double Rubs	300 hours	Cal. 117-2013 NFPA 260/UFAC Class 1 FMVSS 302	WS, BC, CFC
GADGET Directional	80% Hyphyn™ Biodegradable Vinyl face, 20% Hyphyn™ Biodegradable Polyester backing	GREENGUARD Gold	30 oz.	6.75" H, 6.75" V	Soil & Stain Resistant Top Coat	250,000^ Double Rubs	200 hours	Cal. 117-2013 NFPA 260/UFAC Class 1	WS, BC, CFC
GAIA	80% Hyphyn™ Biodegradable Vinyl face, 20% Hyphyn™ Biodegradable Polyester backing	GREENGUARD Gold	31 oz.	None	Soil & Stain Resistant Top Coat	250,000^ Double Rubs	300 hours	Cal. 117-2013 NFPA 260/UFAC Class 1 FMVSS 302	WS, BC, CFC
TELLUS Directional	80% Hyphyn™ Biodegradable Vinyl face, 20% Hyphyn™ Biodegradable Polyester backing	GREENGUARD Gold	31 oz.	None	Soil & Stain Resistant Top Coat	250,000^ Double Rubs	300 hours	Cal. 117-2013 NFPA 260/UFAC Class 1 FMVSS 302	WS, BC, CFC
UNIVERSE Directional	80% Hyphyn™ Biodegradable Vinyl face, 20% Hyphyn™ Biodegradable Polyester backing	GREENGUARD Gold	30 oz.	13.5" H, 27" V	Soil & Stain Resistant Top Coat	250,000^ Double Rubs	200 hours	Cal. 117-2013 NFPA 260/UFAC Class 1	WS, BC, CFC

### REDUCED ENVIRONMENTAL IMPACT

These products are GREENGUARD Gold Certified for low chemical and particle emissions to UL standard UL 2818 and may contribute to LEED certification.

No FR Additives    No Antimicrobials/Antibacterial Additives    PFAS Free

### CARE AND CLEANING INFORMATION

WS: Water/Solvent Cleaner                      CFC: Coated Fabrics Cleaning – Refer to Mayer website for complete cleaning info.

BC: Bleach Cleanable – 1 part bleach, 9 parts water = 10% bleach, 90% water solution. **Do not clean/disinfect fabric for longer than 10 minutes using the 10% bleach solution. Always rinse promptly with clean water after applying the bleach solution. Failure to do so will void any and all warranties.**

### DYE TRANSFER DISCLAIMER

Certain clothing and accessory dyes (such as those used on denim jeans) may migrate to lighter colors. This phenomenon is increased by humidity and temperature and is irreversible. Mayer Fabrics will not assume responsibility for dye transfer caused by external contaminants. Please check compatibility when using this product in combination with painted or varnished surfaces.

### ADDITIONAL INFORMATION

^ Abrasion test results exceeding ACT Performance Guidelines are not an indicator of product lifespan. Multiple factors affect fabric durability and appearance retention.

Warranty: Please refer to the Mayer website for warranty information by pattern.

Custom Colors: All patterns can be custom colored. Minimum yardage applies.

Digital Swatch Card Color Matching: Due to color variations on different monitors and color printers, actual swatch colors may vary slightly. Please request a memosample from Mayer Fabrics to ensure proper color representation.

Complete and current product information available at [mayerfabrics.com](http://mayerfabrics.com).

