



Mayer Fabrics

Fabric  
**Vector**

# VECTOR FABRIC

Fabric Card

While every effort is made to present as accurate reproduction as possible, colors on actual products may vary slightly from digital reproductions.



VE-006  
STEEL



VE-007  
LATTE



VE-016  
IRON



VE-014  
SAPPHIRE



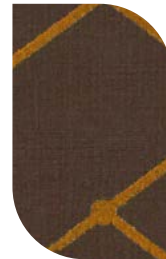
VE-004  
HAZE



VE-003  
MINT



VE-001  
RAISIN



VE-000  
DARK COPPER

NOTE: We do not guarantee matches and recommend you examine a sample prior to accepting a color match.



ISO 9001  
certified

ISO 14001  
certified



Borgo Contract Seating  
324 Carlingview Drive Toronto, Ontario M9W 5G5  
[www.borgo.com](http://www.borgo.com) | [sales@borgo.com](mailto:sales@borgo.com) | T. 416 679.8133 | Toll Free. 1 888 312.6746

© Borgo Contract Seating - December 10, 2020 2:45 PM

# VECTOR FABRIC

Fabric Card

## TECHNICAL INFORMATION

Content: 40% Polyurethane Polycarbonate - PVC Free Face, 60% Polyester Backing	Backing: Polyester	Visual Repeat: 20.25" H, 10.25" V
Width: 54"	Finish: WRITE AWAY® - Soil and Stain Resistant Top Coat with Ink Resistant Technology	Directionality: False
Weight: 16 oz./linear yard	Cleaning Code: WS, CFC, BC	Shown RR: False

## PERFORMANCE

Surface Abrasion: Heavy Duty	Exceeds 100,000 Double Rubs (Wyzenbeek)
Breaking Strength:	Warp: 141.3 lbs. / Fill: 58.8 lbs.
Seam Slippage:	Warp: 155.8 lbs. / Fill: 124.7 lbs.
Colorfastness to Crocking:	Dry: Class 4 min / Wet: Class 4 min
Colourfastness to Light:	200 hours

## FLAMMABILITY

Passes Cal 117-2013; NFPA 260/UFAC Class 1; IMO A.652(16) 8.2

## CLEANING

WS: Water/Solvent Cleaner - Spot clean with a mild solvent, an upholstery shampoo, or the foam from a mild detergent. When using a solvent or dry cleaning product, follow instructions carefully and clean only in a well-ventilated room. Avoid any product that contains carbon tetrachloride or other toxic materials. With either method, pretest a small area before proceeding. Always rinse promptly with clean water.

CFC: Coated Fabrics Cleaning - Please refer to cleaning information section on Mayer website for complete cleaning info.

BC: Bleach Cleanable - 1 parts bleach, 9 parts water = 10% bleach, 90% water solution. Do not clean / disinfect fabric for longer than 10 minutes using the 10% bleach solution. Always rinse promptly with clean water after applying the bleach solution. Failure to do so will void any and all warranties.

Write-Away products from Mayer Fabrics defies unsightly ink spots and paint stains. Take action 'right away' on Write-Away products by following the cleaning instructions for Ink Stains. Always rinse thoroughly with clean water.



ISO 9001  
certified

ISO 14001  
certified



Borgo Contract Seating

324 Carlingview Drive Toronto, Ontario M9W 5G5  
www.borgo.com | sales@borgo.com | T. 416 679.8133 | Toll Free. 1 888 312.6746

© Borgo Contract Seating - December 10, 2020 2:45 PM