



**M o r k & M i n d y**  
design Orlandini



## **MINDY**

An elegant silhouette defines Mindy, a graceful shell offers support and comfort in small spaces.



## **YOUR SPACE YOUR CHAIR**

These beautifully designed chairs can be fitted with upholstered options. Four Leg and Sled Base chairs are at home in cafeterias and public spaces. The Swivel Base is perfect for work and collaborative environments. For waiting areas the Pyramid and Spoke base models are ideal, with their swivel and fixed options.



## **MORK**

Mork is defined by more generous proportions. The addition of an upholstered back panel and four wood legs brings a residential feel to this line.



### **PERFECT DESIGN FOR EVERY SPACE**

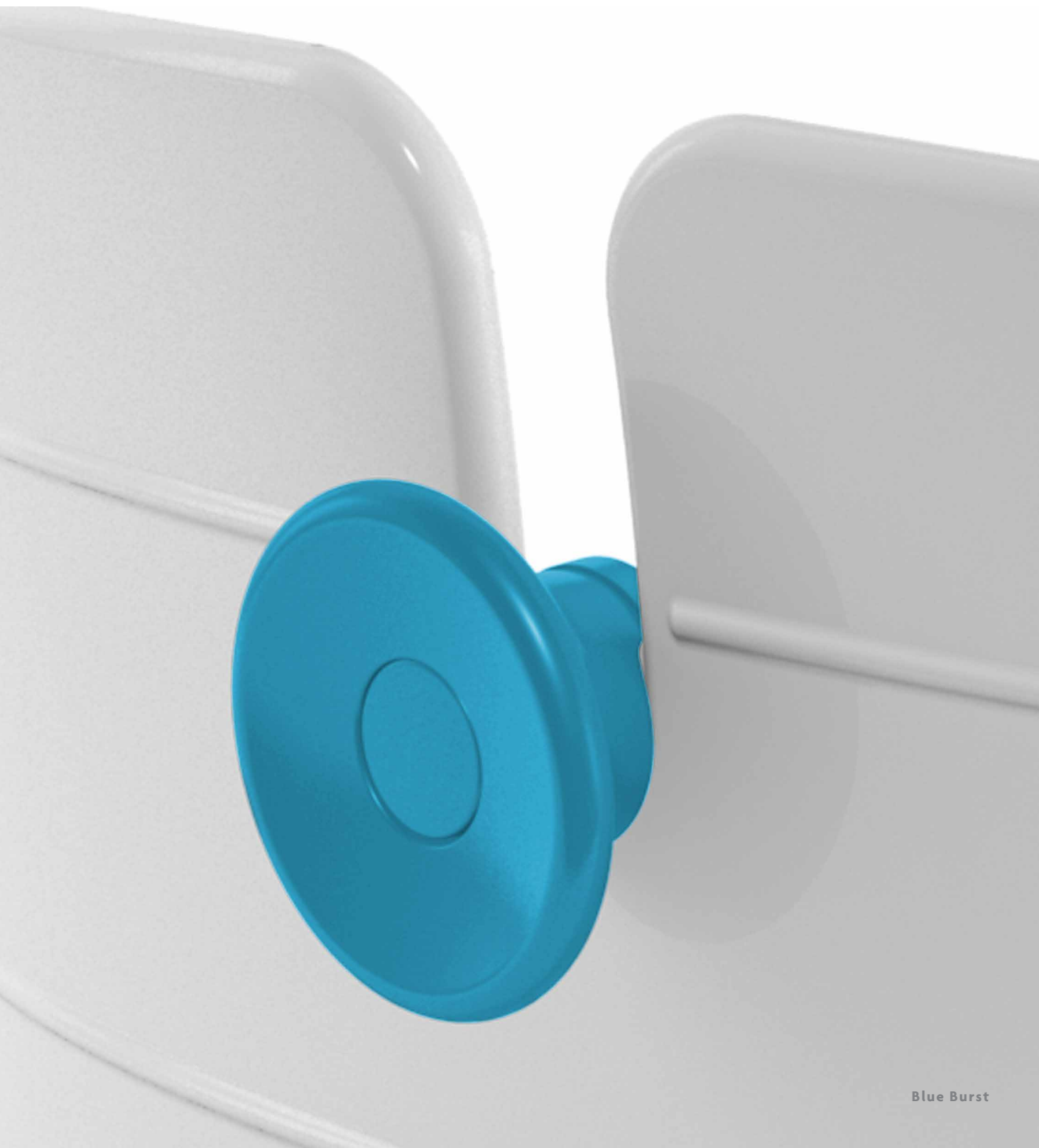
Designed out of Milan by Orlandini, the main focus was to design a stylistic figure that is economical, reliable and provides a solution.

Combining ergonomics with style within its design, this multi-purpose chair has a unique silhouette and structure. The pair is always at ease in any space, both public and private within an array of environments.



## FUNCTIONAL GOOD DESIGN

Mobility doesn't always mean wheels, the playful button featured on the back of the Mork & Mindy offers an intuitive handle to pull the chair out from under a table. The fun does not stop there, the button also doubles as a place to hang a bag, backpack or coat. Available in Road, Cloud and Blue Burst.



# Mork & Mindy

## FEATURES

- Molded textured polymer shell made of polypropylene. Contoured seat and back, gently hugs the user's body.
- Designer polymer button on back of chairs functions as a handle and hanger.
- Four Leg Base is made of chrome-plated 8 guage (16 mm), steel tube with black self-leveling nylon glides (Models #6460 & #6670).
- Sled Base frame is made of chrome-plated 0.5"/12 mm wire frame with clear nylon glides (Models #6461 & #6671).
- Four Leg and Sled Base models feature an underseat cover made of polypropylene that provides both a clean look and ease for stacking (Models #6460, #6461, #6670, #6671 & #6675).
- Four Leg Base and Sled Base models stack six chairs high on the floor and eight chairs high on a dolly (Models #6460, #6461, #6670 & #6671).
- Four Leg Spoke Base is made of die cast aluminum with 360 degrees swivel on glides (Models #6462 & #6672).
- Four Leg Pyramid Base made of die cast aluminum with 360 degrees swivel on glides (Models #6463 & #6673).
- Swivel Base with Casters is height adjustable with 360 degrees swivel; Dual wheel casters for soft floors are standard. Mechanism, gas cylinder and base are in polished finish (Models #6464 & #6674).
- Mork also features a Four Leg Wood Base made of beech wood stained in Natural finish (Model #6675).

## OPTIONS

- Upholstered (-U) seat versions feature a padded seat with high-density, CFC free polyurethane foam
- Fully Upholstered (-F) versions features a padded back and seat with high-density, CFC free polyurethane foam
- Button Color is standard in Road. Other color options are Cloud and Blue Burst
- Polypropylene shell is available in four standard colors: Snowball, Sandy, Road and Horizon. Other color options are Milky, Sunsplash, Peppermint, and Violet
- Dolly available for Four Leg Base and Sled Base models (Models #6670 & #6671)
- Auto Return for Four Leg Spoke Base & Pyramid Base
- Fixed/No Swivel for Four Leg Pyramid Base

## SHELL COLORS



## MINDY



**6460**

Four Leg Base



**6461**

Sled Base



**6462**

Four Leg Spoke Base



**6463**

Four Leg Pyramid Base



**6464**

Swivel Base with Casters

## DIMENSIONS\*

Measurements based on model 6460\*

Overall Height:	31.5"	800 mm
Overall Width:	21"	535 mm
Overall Depth:	20.5"	520 mm
Back Height:	14"	355 mm
Seat Height:	17.75"	450 mm
Seat Width:	17.75"	450 mm
Seat Depth:	15"	380 mm
Wt/Chair:	13 lbs.	5.9 kg

## MORK



**6670**

Four Leg Base



**6671**

Sled Base



**6672**

Four Leg Spoke Base



**6673**

Four Leg Pyramid Base



**6674**

Swivel Base with Casters



**6675**

Four Leg Wood Base

Measurements based on model 6670\*

Overall Height:	31.5"	800 mm
Overall Width:	23.5"	595 mm
Overall Depth:	21.75"	550 mm
Back Height:	14"	355 mm
Seat Height:	17.75"	450 mm
Seat Width:	19.75"	500 mm
Seat Depth:	16.5"	420 mm
Wt/Chair:	15 lbs.	6.8 kg

\*For complete dimensions see Price List